

Editor in Chief

Bilgin Timuralp

Advisory Board of This Issue

Ayşen Aksöyek

Sglimbea Anca

Sevcan Atay

Hüseyin Bozbaş

Mete Civelek

Ayşe Yeşim Göçmen

Alon Grossman

Yeşim Güray

Dolunay Gürses

Tolga Sinan Güvenç

Can Yücel Karabay

Gönenç Kocabay

Sinan Altan Kocaman

Geoffrey Kloppenburg

Alessio Lilli

Abdurrahman Oğuzhan

Morteza Seifi

Emrullah Solmazgöl

Juan G. Cordoba Soriano

Müslüm Şahin

Wei-Chuan Tsai

Omaç Tüfekçioğlu

Kürşat Yaykaşlı

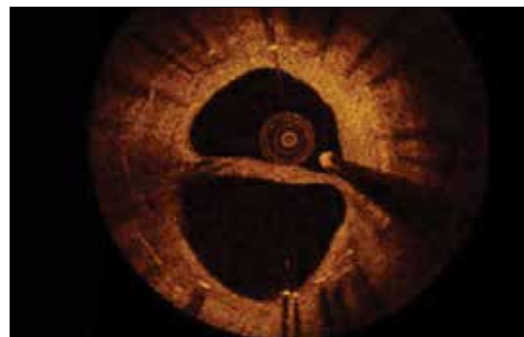
Yalın Tolga Yaylalı

Mustafa Yıldız

Shi-Min Yuan

Original InvestigationsElevated serum gamma-glutamyltransferase levels in patients with dilated ascending aorta
Bülent Demir et al.; Istanbul-TurkeyIs there a relationship between serum paraoxonase level and epicardial fat tissue thickness?
Ahmet Göktuğ Ertem et al.; Ankara-TurkeyValvular and ventricular functions in Parkinson patients using ergotamine-derived dopamine agonist
Necla Özer et al.; Ankara-TurkeyMetabolic syndrome and left atrial mechanics in patients without overt diabetes
Mustafa Kurt et al.; Hatay-TurkeyMean platelet volume in prediction of clopidogrel resistance in acute coronary syndrome
Hazel Uzel et al.; Izmir-TurkeyPain levels of transradial versus transfemoral coronary catheterization: a randomized study
Erdal Aktürk et al.; Adıyaman-TurkeyEditorial Comment: Transradial approach: Do we have gain without excessive pain?
Tariq Farman; Karachi-PakistanEditorial Comment: Time for pain: today or tomorrow?
Alessandro Sciahbasi; Rome-ItalyClinical features of aviators with coronary artery disease diagnosed by multislice CT angiography
Muhammed Erdal et al.; Ankara-TurkeyEditorial Comment: Prediction of coronary artery disease documented by multi-slice CT angiography in aviation
Alon Grossman; Tel Hashomer-IsraelIodixanol, iopamidol and adhesion molecule in angina undergoing angiography: a randomized study
Filiz Akyıldız Akçay et al.; Mersin-TurkeyThe QT prolongation and clinical features in patients with takotsubo cardiomyopathy
Bong Gun Song et al.; Seoul-KoreaEditorial Comment: Prognostic impact of QT intervals in takotsubo cardiomyopathy
Francesco Rotondi; Avellino-ItalyClinical outcome, pain perception and activities of daily life after minimally invasive coronary bypass
Bariş Uymaz et al.; Ankara-Turkey**Reviews**Heart failure: a complex clinical process interpreted by systems biology and network medicine
George E. Louridas et al.; Thessaloniki-GreeceRenal denervation
Todd Drexel et al.; Frankfurt-Germany**Education**Approach to cases with resistant hypertension
Dilek Torun; Adana-Turkey

Page: E-5



Editor in Chief
Bilgin Timuralp, Eskişehir, Turkey

Associate Editors

Necmi Ata, <i>Eskişehir, Turkey</i>	Yılmaz Nişancı, <i>İstanbul, Turkey</i>
Mehmet Bilge, <i>Ankara, Turkey</i>	Kurtuluş Özdemir, <i>Konya, Turkey</i>
Alparslan Birdane, <i>Eskişehir, Turkey</i>	Ercan Tutar, <i>Ankara, Turkey</i>
Yüksel Çavuşoğlu, <i>Eskişehir, Turkey</i>	Ahmet Tulga Ulus, <i>Ankara, Turkey</i>
Sadi Güleç, <i>Ankara, Turkey</i>	Berrin Umman, <i>İstanbul, Turkey</i>
Sanem Nalbantgil, <i>İzmir, Turkey</i>	Mehdi Zoghi, <i>İzmir, Turkey</i>

Editor in Chief Consultant

Suna Kırac, *Denizli, Turkey*

Senior Consultant in Biostatistics

Kazım Özdamar, *Eskişehir, Turkey*

Consultants in Biostatistics

Canan Baydemir, <i>Kocaeli, Turkey</i>	İlker Ünal, <i>Adana, Turkey</i>
--	----------------------------------

International Editorial Board

Adnan Abacı, <i>Ankara, Turkey</i>	Ali Ergin, <i>Kayseri, Turkey</i>	Jason M. Lazar, <i>New York, USA</i>	Horst Sievert, <i>Frankfurt, Germany</i>
Kamil Adalet, <i>İstanbul, Turkey</i>	Çetin Erol, <i>Ankara, Turkey</i>	Peter Macfarlane, <i>Renfrewshire, Scotland</i>	İlke Sipahi, <i>İstanbul, Turkey</i>
Ramazan Akdemir, <i>Sakarya, Turkey</i>	Ali Serdar Fak, <i>İstanbul, Turkey</i>	Robert W. Mahley, <i>San Francisco, CA, USA</i>	İnan Soydan, <i>İzmir, Turkey</i>
Levent Akyürek, <i>Göteborg, Sweden</i>	Roberto Ferrari, <i>Ferrara, Italy</i>	G.B. John Mancini, <i>Vancouver BC, Canada</i>	Hulki Meltem Sönmez, <i>Aydın, Turkey</i>
Tayfun Aybek, <i>Ankara, Turkey</i>	Armen Y. Gasparyan, <i>West Midlands, UK</i>	Matti Mänttari, <i>Helsinki, Finland</i>	Richard Sutton, <i>Monaco, Monaco</i>
Mehmet Ateş, <i>İzmir, Turkey</i>	Ali Gholamrezanezhad, <i>Tehran, Iran</i>	Barry J. Maron, <i>Minnesota, USA</i>	Ahmet Şaşmazel, <i>İstanbul, Turkey</i>
Saide Aytekin, <i>İstanbul, Turkey</i>	Hasan Gök, <i>Konya, Turkey</i>	Pascal Meier, <i>London, UK</i>	Zeynep Tartan, <i>İstanbul, Turkey</i>
Vedat Aytekin, <i>İstanbul, Turkey</i>	Bülent Görenek, <i>Eskişehir, Turkey</i>	Franz H. Messerli, <i>New York, USA</i>	Oğuz Taşdemir, <i>Ankara, Turkey</i>
Ljuba Bacharova, <i>Bratislava, Slovak Republic</i>	Sema Güneri, <i>İzmir, Turkey</i>	Haldun Müderrisoğlu, <i>Ankara, Turkey</i>	Ahmet Temizhan, <i>Ankara, Turkey</i>
Luiggi P. Badano, <i>Udine, Italy</i>	Deniz Güzelsoy, <i>İstanbul, Turkey</i>	İstemi Nalbantgil, <i>İzmir, Turkey</i>	Adam Timmis, <i>London, England</i>
Gani Bajraktari, <i>Prishtina, Kosovo</i>	Masayasu Hiraoka, <i>Tokyo, Japan</i>	Navin C. Nanda, <i>Birmingham, AL, USA</i>	S. Lale Tokgözoğlu, <i>Ankara, Turkey</i>
Işık Başar, <i>İstanbul, Turkey</i>	Coşkun İkizler, <i>Ankara, Turkey</i>	Altan Onat, <i>İstanbul, Turkey</i>	Oktay Tutarel, <i>Hannover, Germany</i>
George A. Beller, <i>Charlottesville VA, USA</i>	Barış İlerigelen, <i>İstanbul, Turkey</i>	Hakan Oral, <i>Ann Arbor, MI, USA</i>	Murat Tuzcu, <i>Cleveland, OH, USA</i>
Ahmet Birand, <i>İstanbul, Turkey</i>	Gökhan İpek, <i>İstanbul, Turkey</i>	M. Remzi Önder, <i>İzmir, Turkey</i>	Volkan Tuzcu, <i>İstanbul, Turkey</i>
Dirk L. Brutsaert, <i>Antwerp, Belgium</i>	Erkan İriz, <i>Ankara, Turkey</i>	Zeki Öngen, <i>İstanbul, Turkey</i>	Sabahattin Umman, <i>İstanbul, Turkey</i>
Gerald D. Buckberg, <i>Los Angeles, CA, USA</i>	Diwakar Jain, <i>Philadelphia, USA</i>	Necia Özer, <i>Ankara, Turkey</i>	Dilek Ural, <i>Kocaeli, Turkey</i>
Cahid Civelek, <i>St. Louis, MO, USA</i>	Charles Jazra, <i>Bawchrieh, Lebanon</i>	Mehmet Bülent Özün, <i>Ankara, Turkey</i>	Ahmet Ünalır, <i>Eskişehir, Turkey</i>
Ubeydullah Deligönül, <i>Tyler TX, USA</i>	Göksel Kahraman, <i>Kocaeli, Turkey</i>	Mehmet Özkan, <i>İstanbul, Turkey</i>	Marc A. Vos, <i>Utrecht, Netherlands</i>
Ufuk Demirkılıç, <i>Ankara, Turkey</i>	Mehmet Kaplan, <i>İstanbul, Turkey</i>	Süheyla Özkutlu, <i>Ankara, Turkey</i>	Galen Wagner, <i>Durham, NC, USA</i>
Ertan Demirtaş, <i>Ankara, Turkey</i>	Sezer Karcier, <i>İstanbul, Turkey</i>	Azmi Özler, <i>İstanbul, Turkey</i>	Hein Wellens, <i>Maastricht, Netherlands</i>
Ali Emin Denктаş, <i>Houston, TX, USA</i>	Erdem Kaşıkçıoğlu, <i>İstanbul, Turkey</i>	Ahmet Fatih Özyazıcıoğlu, <i>Bursa, Turkey</i>	Nuran Yazıcıoğlu, <i>İstanbul, Turkey</i>
Polychronis Dilaveris, <i>Athens, Greece</i>	Cihangir Kaymaz, <i>İstanbul, Turkey</i>	Sotirios N. Prapas, <i>Athens, Greece</i>	Murat Yeşil, <i>İzmir, Turkey</i>
Fırat Duru, <i>Zurich, Switzerland</i>	Mustafa Kılıç, <i>Denizli, Turkey</i>	Shahbudin Rahimtoola, <i>Los Angeles, CA, USA</i>	Remzi Yılmaz, <i>Antalya, Turkey</i>
Rasim Enar, <i>İstanbul, Turkey</i>	Serdar Kula, <i>Ankara, Turkey</i>	Vedat Sansoy, <i>İstanbul, Turkey</i>	Kiyoshi Yoshida, <i>Okayama, Japan</i>
Oktay Eray, <i>Antalya, Turkey</i>	Serdar Küçükkoğlu, <i>İstanbul, Turkey</i>	Muhammed Saric, <i>New York, USA</i>	Mehmet Yokuşoğlu, <i>Ankara, Turkey</i>
Ertuğrul Ercan, <i>İzmir, Turkey</i>	Hakan Kültürsay, <i>İzmir, Turkey</i>	Murat Sezer, <i>İstanbul, Turkey</i>	Jose L. Zamorano, <i>Madrid, Spain</i>
Okan Erdoğan, <i>İstanbul, Turkey</i>	Samuel Levy, <i>Marseille, France</i>	Mark V. Sherrid, <i>New York, USA</i>	Wojciech Zareba, <i>New York, USA</i>



Publisher
İbrahim KARA

Publication Director
Ali ŞAHİN

Deputy Publication Directors
Gökhan ÇİMEN
Ayşegül BOYALI

Publication Coordinators
Nilüfer TÜRKYILMAZ
Merve AKDEMİR SAĞLIK

Sales Coordinator
Sinan Gökbörü BÜNCÜ

Finance and Administration
Veysel KARA

Project Assistant
Gizem KOZ

Graphics Department
Ünal ÖZER
Neslihan YAMAN
Merve KURT

Contact
Address : Büyükdere Cad. No: 105/9
34394 Mecidiyeköy,
Şişli, İstanbul
Phone : +90 212 217 17 00
Fax : +90 212 217 22 92
E-mail : info@avesyayincilik.com

Editor in Chief Office

Phone : +90 222 229 15 65
Fax : +90 222 229 15 85
E-mail : info@anakarder.com
btimur@ogu.edu.tr

Assistants to the Editor in Chief

Betül TUNTAŞ
Bilge TUNALI



The Anatolian Journal of Cardiology is partly supported by University of Eskişehir Osmangazi (ESOGU).

ESKİŞEHİR OSMANGAZI ÜNİVERSİTESİ
MEŞELİK KAMPÜSÜ 26480 ESKİŞEHİR
Phone: +90 222 239 71 48
Fax: +90 222 239 54 00

İmtiyaz Sahibi ve Sorumlu Yazı İşleri Müdürü:

İbrahim KARA
Yayın Türü : Yerel Süreli
Basım Tarihi: Mart 2014
Basım Yeri: ADA Ofset Matbaacılık
Tic. Ltd. Şti., Litros Yolu 2. Matbaacılar S.
E Blok No: (ZE2) 1. Kat Topkapı, İstanbul
Telefon: +90 212 567 12 42

AIMS AND SCOPE

The Anatolian Journal of Cardiology is the double-blind peer-reviewed, published in Turkish and English languages international open access periodical on cardiology. The Anatolian Journal of Cardiology is published 8 times per year (February, March, May, June, August, September, November and December).

The aim of the Anatolian Journal of Cardiology is to publish research articles on original issues of cardiology of the highest clinical and scientific quality at the international level. Along with this, it publishes reviews covering fundamental innovations and dealing with education, short editorial articles, original case reports and images, letters on experience relevant to broad cardiology issues and critiques, as well as issues on social cardiology.

The journal's audience includes cardiologists, pediatric cardiologists, cardiovascular surgeons, internal medicine specialists, practitioners and specialists of all relevant disciplines.

The journal's editorial and publishing process is adherent to standards of ICMJE, COPE, and HEART Group.

Copyright Transfer, Conflict of Interest Declaration and Authorship Contributions forms are available at www.anakarder.com.

The Anatolian Journal of Cardiology is indexed in Science Citation Index Expanded, Index Medicus/Medline/PubMed, EMBASE, Scopus, EMCare, CINAHL, Gale/Cengage Learning, EBSCO, DOAJ, ProQuest, Index Copernicus and Tübitak/Ulakbim Turkish Medical Database.

The funding sources of the journal are advertising and subscription.

Subscription information

The access to all full-text issues of the journal is free at www.anakarder.com. To subscribe to the print issues of the journal please fill the subscription form at www.anakarder.com and contact the Publisher.

Permissions and Reprints

Permissions for reproduction of materials published and Reprints in the Anatolian Journal of Cardiology should be requested from the Publisher:

Advertising

For requests concerning advertising, please contact Publisher.

Publisher

AVES-Ibrahim Kara

Address: Büyükdere Cad. No: 105/9 34394 Mecidiyeköy, Şişli, İstanbul-*Turkey*

Phone: +90 212 217 17 00

Fax: +90 212 217 22 92

Web page: www.avesyayincilik.com

E-mail : info@avesyayincilik.com

Instructions for authors

Instructions for authors are published in the journal pages and could be accessed at the web site of the journal - www.anakarder.com

Material Disclaimer

Statements or opinions expressed in the manuscripts published in the Anatolian Journal of Cardiology reflect the views of the author(s) and not the opinions of the editors, the editorial board and the publisher; the editors, the editorial board and the publisher disclaim any responsibility or liability for such materials.

The journal is printed on an acid-free paper.

INSTRUCTIONS FOR AUTHORS

Editor in Chief: Professor Dr. Bilgin TİMURALP

Address of Correspondence: Anadolu Kardiyoloji Dergisi
Büyükdere Cad. No: 105/9/34394 Mecidiyeköy, Şişli-İstanbul / Turkey
Phone : +90 222 229 15 65 - +90 533 966 48 67
Fax : +90 222 229 15 85
Web page: www.anakarder.com
E-mail: btimur@ogu.edu.tr - info@anakarder.com

The Anatolian Journal of Cardiology, being a double-blind peer-reviewed journal, publishes articles on clinical cardiology with clear clinical relevance including experimental, fundamental and original clinical studies, postgraduate education on cardiology, investigations concerning especially Turkish public health, case reports, relevant letters with questions, answers and contributions, history of cardiology, publication and research ethics, as well as letters on expected, applied and changed relations between State institutions and physicians, works and developments of Turkish and World Societies of Cardiology. The referee's board that advises the selection of papers for publication by Editor consists of the elected advisory experts of the journal and is selected from independent national and international experts in the relevant field. The Anatolian Journal of Cardiology is published 8 times per year, including February, March, May, June, August, September, November and December.

Proper use of Turkish language is of special importance. Turkish Language Institution dictionary and orthography guide together with dictionary of cardiology terms published by Turkish Society of Cardiology should be taken as basic for literary language. Papers written in English language are particularly supported and encouraged.

An approval of research protocols by Ethics Committee in accordance with international agreements (Helsinki Declaration of 1975, revised 2008 - available at <http://www.wma.net/en/30publications/10policies/b3/index.html>), "Guide for the care and use of laboratory animals" - www.nap.edu/catalog/5140.html) is required for experimental, clinical and drug studies.

The submission of a written document with institutional approval of Ethics Committee or equivalent confirming the research protocol, even some case reports, are performed in frame of general ethical rules, is mandatory.

The signed statement of scientific contributions and responsibilities of all authors and statement on absence of conflict of interests are required. (ICMJE Form for Disclosure of Potential Conflicts of Interest and Authorship Contributions form is available at www.anakarder.com). The journal's policy on publication and research ethics is in compliance with ICMJE, COPE and HEART Group rules.

The authors should acknowledge and provide information on grants, contracts or other financial support of the study provided by any foundations and institutions or firms.

The priority in acceptance of manuscripts for publication is given to original research manuscripts and reviews of high scientific and academic quality, in addition limited number of case reports and original images and other types of manuscripts are accepted for publication.

Statements and suggestions published in manuscripts are under the authors responsibility and do not reflect opinions of editors and their associates.

Manuscripts are considered for review only in cases if they have not been published previously elsewhere or are not currently under consideration in other journals. Only those data presented at scientific meetings (notification of scientific conference of session is required) in form of preliminary results - abstracts that does not exceed 200 words - could be accepted for consideration.

The retraction requests of manuscripts, being under consideration and close to the final decision, without reasonable explanation will result in "reject" decision.

The authors of the paper accepted for publication in AJC should be in consent of that editors could make corrections without changing the presented data or the basic meaning of the text of the manuscript written either in Turkish or English languages.

To be accepted for publication, it is required that manuscripts should be original and of high scientific and academic quality, with probability of being cited.

General Guidelines

Manuscripts and enclosed letters should be submitted to the Editor in Chief office through online manuscript submission system www.anadolukardiyol.org; you may find information at www.anakarder.com

Rejected manuscripts, except artwork usually are not returned. All manuscripts are reviewed by editors, editor's consultant, statistical consultants and at least three experts/referees. Proposal of names of three independent referees, who are unaware of the study and had no relationship with authors or author's institutions, but are experts in the field of the study, by first author is important for the journal.

In case of previous submission of manuscripts for consideration to other journals, submission of manuscripts together with referee's reports is mandatory and will facilitate the consideration.

Before sending manuscript for review to referees editor checks the adherence of the manuscript's format to general guidelines. The spelling and grammar errors are required to be corrected before submission of manuscript. The revised versions of manuscripts should include incorporated revisions highlighted. Manuscripts that do not comply with Instructions to Authors will not undergo peer-review.

Authors are required to submit the revision within 21 days, and the referee's evaluation period is limited by 21 days.

Manuscripts format should be in accordance with *ICMJE-Recommendations for the Conduct, Reporting, Editing and Publication of Scholarly Work in Medical Journals* (updated in December 2013 - <http://www.icmje.org/icmje-recommendations.pdf>).

The filled authorship contributions form must be submitted along with manuscript. The journal's rules on authorship contributions are in compliance with CSE (<http://www.councilscienceeditors.org/44/pages/index.cfm?pageid=3376>) and ICMJE (http://www.icmje.org/ethical_1author.html) recommendations.

Starting from June 2012, in order to be considered for review, it is obligatory for the case reports and original images submitted to the Anatolian Journal of Cardiology that

the first authors must subscribe to the journal for at least one year. This obligation is needed to begin the review process and does not provide any priority in acceptance or publication procedures. The manuscript of the subscriber author is reviewed according to the instructions and principles defined under the related titles, General Guidelines and Special Parts. One-year subscription price is 220 \$ and it is necessary to contact with publication house: AVES - +90 212 589 00 53 - info@avesyayincilik.com

Original Investigations and Reviews should be presented according to the guidelines: randomized study - CONSORT, observational study - STROBE, study on diagnostic accuracy - STARD, systematic reviews and meta-analysis PRISMA, animal experimental studies - ARRIVE, nonrandomized behavioral and public health intervention studies - TREND.

Research Articles

1. Original research articles: Manuscript should not exceed 5000 words and should be accompanied by necessary number of tables and figures. Fifty references seem to be enough for confidence.

1.1-Title page is the first page of the manuscript, which should be uploaded as separate WinWord file and include: full names of authors with their last academic degrees and manuscript title consisted of no more than 50 characters. These should be followed by complete descriptions of the department, institutions and city, country where the work was done. If the study was performed at different institutions it should be noted by symbols. Full address for correspondence contains full name of the first author or responsible authors, postal and e-mail addresses, phone and fax numbers. If manuscripts content has been presented before, time and place of the conference should be denoted.

1.2 Structured abstract, in Turkish language should not exceed 250 words and consists of the Objective, Methods, Results and Conclusion sections. No more than 6 keywords concordant with NLM MeSH vocabulary terms (available at <http://www.nlm.nih.gov/mesh/MBrowser.html>) must follow the structured abstract.

1.3 Structured abstract in English language written due to the above mentioned in part 1.2 rules.

1.4 Main text includes Introduction, Methods, Results, Discussion, Study Limitations, Conclusions and References sections. It would be useful to present Methods, Results and Discussion parts with subsections and subtitles. Main text should not exceed 5000 words and should be written in Times New Roman 12 font style. Finally, acknowledgement to persons who significantly contributed to the study or assisted in preparing article should be done appropriately. The latter note should be sent by e-mail or uploaded to the system in form of separate "Acknowledgement" WinWord file.

1.5 Statistical analysis should be performed in accordance with guidelines on reporting statistics in medical journals (Lang T, Altman D. Basic statistical reporting for articles published in clinical medical journals: the SAMPL Guidelines. In: Smart P, Maisonneuve H, Polderman A (eds). Science Editors' Handbook, European Association of Science Editors, 2013). Describe software used for analysis. For parametric tests represent continuous variables as mean±standard deviation, while for nonparametric tests represent data as median and range (minimum-maximum) or median and interquartile range (25th and 75th percentiles). Whenever complex analyses are used support the relative risk, odds or hazard ratios values by providing confidence intervals and p values.

1.6 References are numbered in order of citation in the main text and are typed on separate page in double space fashion. Personal communications, unpublished data, manuscripts under publication processing are cited in the main text in parenthesis, but not in list of references. Those abstracts that had been published more than 2 years ago are not accepted as references.

Publications in kind of abstracts are noted in parenthesis (abstr.). Authors are responsible for accuracy of references.

Periodicals:

Standard journal title: Abbreviations of journal titles should be done in accordance with journal abbreviations used in Index Medicus (for journal abbreviations consult List of Journals indexed for MEDLINE published annually by NLM at <http://www.nlm.nih.gov/tsd/serials.html>). In case of six or less authors numbers list of all authors is required. If number of authors exceeds seven, list first 6 authors followed by et al. A list of authors should be followed by the full title of the article, journal title, year, volume and page numbers.

Example: Muller C, Buttner HJ, Peterson J, Roskomun H. A randomized comparison of clopidogrel and aspirin versus ticlopidine and aspirin after placement of coronary artery stents. *Circulation* 2000; 101: 590-3.

Books:

Chapter in a book: Sherry S. Detection of thrombi. In: Strauss HE, Pitt B, James AE, editors. *Cardiovascular Medicine*. St Louis: Mosby; 1974. p. 273-85.

Personal author(s): Cohn PF. Silent myocardial ischemia and infarction. 3rd ed. New York: Marcel Dekker; 1993.

Editor (s), compiler(s) as author: Norman IJ, Redfern SJ, editors. *Mental health care for elderly people*. New York: Churchill Livingstone; 1996.

Conference paper:

Bengnsson S, Sotheman BG. Enforcement of data protection, privacy and security in medical informatics. In: Lun KC, Degoulet P, Piemme TE, Rienhoff Q, editors. *MEDINFO 92. Proceedings of the 7th World Congress on Medical Informatics*; 1992 Sept 6-10; Geneva, Switzerland. Amsterdam: North-Holland; 1992. P 1561-5.

Scientific or technical report:

Smith P, Golladay K. Payment for durable medical equipment billed during skilled nursing facility stays. Final report. Dallas (TX) Dept. of Health and Human Services (US). Office of Evaluation and Inspections: 1994 Oct. Report No: HHSIGOE 169200660.

Dissertation:

Kaplan SI. Post-hospital home health care: the elderly access and utilization (dissertation). St. Louis (MO): Washington Univ. 1995.

Article in electronic format:

Morse SS. Factors in the emergence of infectious diseases. *Emerg Infect Dis* (serial online) 1995. Jan-Mar (cited 1996 June 5). 1(1); (24 screens). Available from: <http://www.cdc.gov/ncidod/dl/cid.htm>.

1.7. Diagrams, Tables and Figures: The figures and pictures should not contain the names of patients, doctors or institutions. Figures and pictures should be sent to the Editor in Chief office. They should be printed in separate from main text pages and

numbered in order of citation in the text. The comments for tables, diagrams and figures are explained in a separate page with brief title. The sufficiently thick lines could be used while preparing of graphics, thus preventing the losses in the quality of graphics while decreasing their size. The largest appropriate and acceptable size of graphics is 8-9 cm or 16-17 cm in width. Figures should be done professionally and no gray colors be used. Used abbreviations should be explained in alphabetic order in the footnote of the table or figure's legend. Do not use Roman numbers in the numeration of tables and figures within text and their titles. The decimal numbers in the text, tables and figures should be separated by period. Especially, the text of tables should be easily understandable and explanatory and should not repeat the data presented in the main text. The pictures/art works in black and white, grey colors are published without additional costs for authors. The color pictures/art work will be published at additional costs - please contact the Editor in Chief office and AVES publishing house.

Note: In addition to printed version of pictures in case reports and original images published in the journal the video/movie images and additional static images are published in the journal's web site www.anakarder.com

The requirements for web site video/movie and static images are:
1. Static images should be submitted in one of the following formats: JPG, GIF, TIFF, BMP
2. Video/movie images should be submitted in following formats: MPEG, VNF
3. The maximum size of the file should be no more than 2 MB
4. Video/movie images and figures/photographs should be sent without description of doctor's or patient's names, institutions and places of origin.

The originality of tables and figures should be confirmed in the accompanying letter. In case of reproduction of tables and figures from other published sources, the appropriate citation should be done and the original source either in hardcopy or electronic (*.pdf) format along with the obtained permission for publication from Copyright owner (publisher, journal or author(s)) should be submitted to the Editor in Chief office.

The rules for title page, references, figures and tables are applicable for all types of manuscripts.

Special Parts

2. Reviews: are prepared by authors or by invited authors. This manuscript should contain the evaluation, discussion, analysis and synthesis of the newest and updated knowledge on topic; intended to be used in clinic, and should define the perspectives for further research. The author should be an expert and have cited published works in the area of interest.

2.1 Unstructured abstract limited to 250 words is required. No more than 6 keywords concordant with NLM MeSH vocabulary terms (available at <http://www.nlm.nih.gov/mesh/MBrowser.html>) must follow the unstructured abstract. Word count is limited by 5000 and references number is limited by 50.

3. Editorials: This type of article is a brief evaluation of published manuscripts by authority in the field of investigation other than referees of the journal. At the end of editorial usually a summary on clinical significance of the study is required.

4. Case reports: Interesting from diagnostic and educational point of view case reports concerning seldom, rare seen even by authorities, those one that usually diagnosed and managed with difficulties, and those cases which description is usually missing in clinical practice applications are published. Limited number of case reports is published. Articles accompanied by video/movie images have high priority for publishing. Case reports consist of introduction, case report, discussion and conclusion parts. Reference and word count numbers are limited (no more than 10 and 700 words), and no abstract is required.

5. Scientific letter: The articles in form of preliminary report aimed to announce the new scientific thoughts and data are accepted for publication as scientific letters. The content of the scientific letter should not contain subheadings and is limited by 900 words. The number of references is limited by 10, and number of figures and tables should not exceed 2.

6. Letter to the Editor: Letter to the Editor is one of the main reasons for publication of this journal. It discusses the importance of the published manuscripts, their missing and deficient sites and usually is limited by 5 references and do not exceed 500 words.

7. Education: Knowledge utilized in clinical applications, included in education curriculum of academic level and confirmed by recent research results should be represented.

7.1 Unstructured abstract limited to 250 words is required. No more than 6 keywords concordant with NLM MeSH vocabulary terms (available at <http://www.nlm.nih.gov/mesh/MBrowser.html>) must follow the unstructured abstract. Word count is limited by 5000 and references number is limited by 50.

8. Original image: The impressive and rare images reflecting important findings based on clinical science, shedding light on fundamental mechanisms of cardiovascular diseases, emphasizing anomalies, enlightening new treatment methods are accepted for publication. Articles with accompanying video/movie images have high priority for publishing. The article including the title, text and figure legends (without references) should not exceed 250 words. Original images are prepared according with the above-mentioned rules and are published in electronic only version.

9. Historical notes: The articles describing important historical events in cardiology (particularly for Turkey) and relevant disciplines, revealing new information on history of disease's diagnosis and treatment. The new historical findings should be the result of a proper research work on the topic. The content of the historical notes should not contain subheadings and is limited by 900 words. The number of references is limited by 10.

10. Publication Ethics: The material published in this section of the journal includes articles providing the contemporary information on publication ethics and cases of ethics misconduct. The articles are limited by 900 words and the number of references is limited by 10. You can find COPE charts on publication ethics at: http://www.publicationethics.org/files/u2/All_flowcharts.pdf.

11. Diagnostic Puzzle: Images which will be of interest for the readers, images of rare cases, obtained from ECG, imaging methods or operation photographs, microscopic-macroscopic anatomic and pathologic findings can be published. Unlike the original images, initial diagnoses of the cases are hidden; and four questions in multiple choice format are prepared. Definite diagnosis-result, explanation and correct answer with instructive images are declared on the ensuing pages of the journal. The Editor in Chief can change the format of the question by permission of the authors of original image or case report sent to journal. The authors can send puzzle article in a format not exceeding a total of 500 words, with a maximum of 8 words in the title and up to three references, five images/videos.

CONTENTS

EDITORIAL

- The state of mind in the Anatolian Journal of Cardiology 105
Bilgin Timuralp; Eskişehir-Turkey

ORIGINAL INVESTIGATIONS

- Elevated serum gamma-glutamyltransferase levels in patients with dilated ascending aorta 106
Bülent Demir, İlker Murat Çağlar, Hande Oktay Türel, Cem Özde, Gönül Açıkarsu, Serkan Çiftçi, İsmail Üngan, Esra Demir, Osman Karakaya, Sibel Özyazgan; İstanbul-Turkey
- Is there a relationship between serum paraoxonase level and epicardial fat tissue thickness? 115
Ahmet Göktuğ Ertem, Ali Erayman, Tolga Han Efe, Bilge Duran Karaduman, Halil İbrahim Aydın, Mehmet Bilge; Ankara, Kahramanmaraş, Muş-Turkey
- Evaluation of the valvular and biventricular functions in Parkinson patients using ergotamine-derived dopamine agonist: an observational study 121
Necla Özer, Hikmet Yorgun, Uğur Canpolat, Bülent Elibol; Ankara-Turkey
- Relation of presence and severity of metabolic syndrome with left atrial mechanics in patients without overt diabetes: a deformation imaging study 128
Mustafa Kurt, İbrahim Halil Tanboğa, Eyüp Büyükkaya, Mehmet Fatih Karakaş, Adnan Burak Akçay, Nihat Şen, Emine Bilen; Hatay, Erzurum, Ankara-Turkey
- Diagnostic accuracy of mean platelet volume in prediction of clopidogrel resistance in patients with acute coronary syndrome 134
Hazel Uzel, Ebru Özpelit, Özer Badak, Bahri Akdeniz, Nezihi Barış, Fatih Aytemiz, Özhan Göldeli; İzmir-Turkey
- Comparison of pain levels of transradial versus transfemoral coronary catheterization: a prospective and randomized study 140
Erdal Aktürk, Ertuğrul Kurtoğlu, Necip Ermiş, Nusret Açıkgöz, Jülide Yağmur, Mehmet Sait Altuntaş, Hasan Pekdemir, Ramazan Özdemir, Adıyaman, Elazığ, Malatya-Turkey
- Editorial Comment: Transradial approach: Do we have gain without excessive pain? 147
Tariq Farman; Karachi-Pakistan
- Editorial Comment: Time for pain: today or tomorrow? 149
Alessandro Sciahbasi; Rome-Italy
- Clinical features of aviators with coronary artery disease diagnosed by multislice CT angiography 150
Muhammed Erdal, Mustafa Aparcı, Zafer Işılak, Uğur Bozlar, Zekeriya Arslan, Murat Ünlü; Ankara, İstanbul-Turkey
- Editorial Comment: Role of clinical features in prediction of coronary artery disease documented by multi-slice CT angiography in aviation 155
Alon Grossman; Tel Hashomer-Israel
- The effects of iodixanol and iopamidol on adhesion molecule serum levels in patients with angina pectoris undergoing coronary angiography: a randomized study 156
Filiz Akyıldız Akçay, Serdar Bayata, Tuna Semerci, Murat Yeşil, Oğuzhan Toklu, Erdi Arkan, Selcen Yakar Tülüce, Mehmet Köseoğlu, İdil Koçağra Yağız; Mersin, İzmir, Afyon, Tekirdağ-Turkey
- The QT prolongation and clinical features in patients with takotsubo cardiomyopathy: Experiences of two tertiary cardiovascular centers 162
Bong Gun Song, Sang Man Chung, Sung Hea Kim, Hyun Joong Kim, Gu Hyun Kang, Yong Hwan Park, Woo Jung Chun, Ju Hyeon Oh; Seoul, ChangwonSi-Korea
- Editorial Comment: Prognostic impact of QT intervals in takotsubo cardiomyopathy: still a long way to trap the octopus 170
Francesco Rotondi, Fiore Manganelli; Avellino-Italy
- Clinical outcome, pain perception and activities of daily life after minimally invasive coronary artery bypass grafting 172
Barış Uymaz, Gül Sezer, Pınar Köksal Coşkun, Onurcan Tarcan, Seyhan Özleme, Tayfun Aybek; Ankara-Turkey

CONTENTS

REVIEW

- ▶ Heart failure: a complex clinical process interpreted by systems biology approach and network 178
George E. Louridas, Katerina G. Lourida; Thessaloniki-Greece

INVITED REVIEW

- ▶ Renal denervation 186
Todd Drexel, Stefan C. Bertog, Laura Vaskelyte, Horst Sievert; MN-USA, Frankfurt-Germany



EDUCATION

- ▶ Approach to cases with resistant hypertension 192
Dilek Torun; Adana-Turkey

SCIENTIFIC LETTERS

- ▶ Evaluation of pulmonary vascular resistance and vasoreactivity testing with oxygen in children with congenital heart disease and pulmonary arterial hypertension 196
Ayhan Çevik, Serdar Kula, Rana Olguntürk, Sedef Tunaoğlu, Deniz Oğuz, Berna Saylan, Cihat Şanlı; Ankara, Kırıkkale-Turkey
- ▶ IL-10R1 (Ser138Gly) functional polymorphism is associated with acute myocardial infarction in Tunisian patients 199
Latifa Khlifi, Elyes Chabchoub, Afef Letaief, Leila Ben Othmen, Mohamed Ali Smach, Bassem Charfeddine, Ramzi Zemni, Limem Khalifa; Sousse-Tunisia

CASE REPORTS

- ▶ The impact of the pre-procedural hemodynamic assessment in transcatheter aortic valve replacement 201
Barış Buğan, Samir R. Kapadia, E. Murat Tuzcu; Ohio-USA
- ▶ Successful use of a cryoablation sheath for closure of problematic atrial septal defect 202
Müslüm Şahin, Elnur Alizade, Mustafa Akçakoyun, Cevat Kıрма; İstanbul-Turkey
- ▶ Cardiac arrest and ventricular tachycardia from coronary embolism: an unusual presentation of infective endocarditis  204
Danai Kitkungvan, Ali E. Denктаş; Houston, TX-USA
- ▶ A rare cause of congestive heart failure after seven years of open heart surgery: Organized intrapericardial hematoma  205
Yalçın Velibey, Sinan Şahin, Servet Altay, Nijat Bakshaliyev, Eyüp Tusun, Sennur Ünal, Mehmet Eren; İstanbul-Turkey


DIAGNOSTIC PUZZLES

- ▶ Change in electrocardiography after cardiopulmoner resuscitation 209
Samet Yılmaz, Fırat Özcan, Dursun Aras; Ankara-Turkey

LETTERS TO THE EDITOR

- ▶ A case of radial arteriovenous fistula during coronary angiography 210
Barçın Özçem; Nicosia-Northern Cyprus
- ▶ An invitation for rethinking about gamma-glutamyltransferase and its association with coronary collaterals 211
Yavuzer Koza, Pınar Demir, Lütfü Aşkın, Uğur Aksu; Erzurum-Turkey
- ▶ Right ventricular functions in obstructive nasal polyposis 212
Ahmed Salah, Shenghua Zhou; Hunan-China
- ▶ Does bilirubin level have an effect on cardiac parameters? 213
Cengiz Öztürk, Şevket Balta; Eskişehir-Turkey
- ▶ Real-time three dimensional transesophageal echocardiography has an incremental value in delineation of paravalvular leakages 214
Mehmet Özkan, Mustafa Ozan Gürsoy; Kars, İzmir-Turkey

CONTENTS

- ▶ Industry compliant health care provider: accepting defeat 216
Ayhan Olcay; İstanbul-Turkey
- ▶ Can white blood cell count be used as a predictor of atrial fibrillation following cardiac surgery? A short literature review 216
Aria Soleimani, Farshad Hasanzadeh Kiabi, Amir Emami Zeydi, Mohammad Reza Habibi; Sari, Mashhad-Iran
- DIAGNOSTIC PUZZLES - Answers**
- ▶ Change in electrocardiography after cardiopulmoner resuscitation 218
Samet Yılmaz, Fırat Özcan, Dursun Aras; Ankara-Turkey
- ALMANAC**
- ▶ Almanac 2013-stable coronary artery disease 219
Shahed Islam, Adam Timmis; London-UK
- E-PAGE ORIGINAL IMAGES**
- ▶ Optical coherence tomography imaging of intrastent neointimal bridge caused by semicircumferencial dissection after drug eluting balloon dilatation of instent restenosis of saphenous venous graft  E-5
Zsolt Köszegi, Tibor Szük, Gusztáv Vajda, Frederick Marty, Csaba Jenei; Debrecen-Hungary, Vienna-Austria
- ▶ Aortic saddle embolism caused by right ventricle thrombus in a 2-year-old girl with Ebstein anomaly and Glenn shunt E-5
Kadir Babaoğlu, Murat Deveci, Şadan Yavuz, Gürkan Altun, Yonca Anık; Kocaeli-Turkey